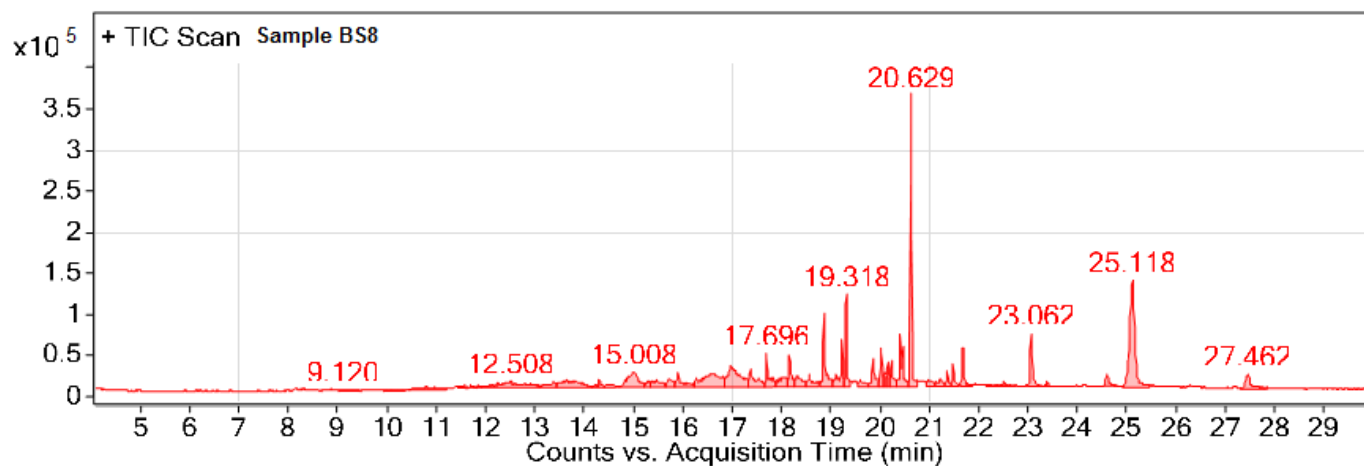


Cite this document

A. Al-Imara, E., J.A. Al-Gazzawy, G. The study of purified secondary metabolites extracts of *Bacillus subtilis* and its chemotaxis effect on biofilm-forming bacteria. *DYSONA - Life Science*, 2020;1(1):1-13. doi: 10.30493/dls.2020.103720

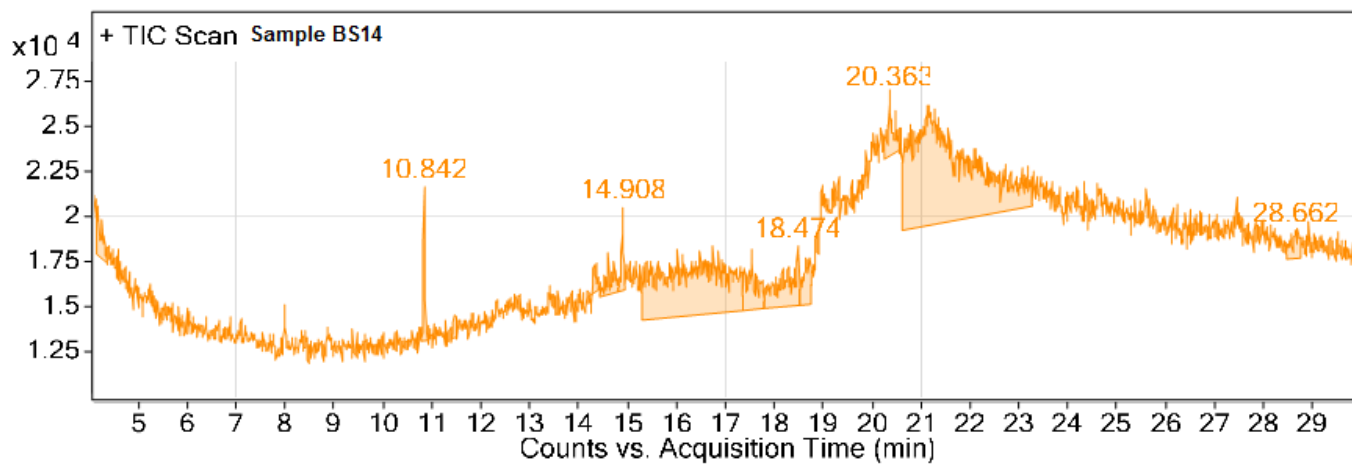
Supplementary Material



Integration Peak List

Peak	Start	RT	End	Height	Area	Area %
1	17.663	17.696	17.885	40679.14	169326.19	16.47
2	18.785	18.863	19.041	89506.35	291430.77	28.35
3	19.041	19.229	19.274	56946.1	205896.07	20.03
4	19.274	19.318	19.396	112793.71	229032.87	22.28
5	19.974	20.018	20.063	47508.23	121297.51	11.8
6	20.34	20.418	20.574	63470.96	276470.18	26.89
7	20.574	20.629	20.751	356404.15	676934.79	65.85
8	21.629	21.674	21.874	47507.77	146413.22	14.24
9	22.984	23.062	23.251	64260.49	213701.58	20.79
10	24.918	25.118	25.462	131024.58	1028032.25	100

Supplementary Figure 1. GC-MS TIC scan for the purified sample of isolate (BS8)



Integration Peak List

Peak	Start	RT	End	Height	Area	Area %
1	4.154	4.165	4.352	2672.84	14947.55	2.86
2	10.797	10.842	10.916	8578.5	18470.85	3.53
3	14.43	14.73	14.808	1763.67	16512.23	3.16
4	14.808	14.908	14.952	4633.75	14484.97	2.77
5	15.297	16.741	17.363	3727.92	295249.48	56.49
6	17.363	17.541	17.796	3401.68	41109.05	7.86
7	17.796	18.474	18.518	3346.25	59034.35	11.29
8	18.518	18.718	18.752	2626.54	25185.04	4.82
9	20.252	20.363	20.561	3680.43	24405	4.67
10	20.618	21.163	23.273	6680.24	522688.79	100

Supplementary Figure 2. GC-MS TIC scan for the purified sample of isolate (BS14)